

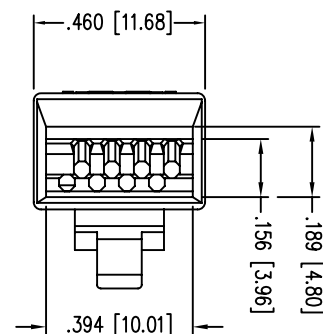
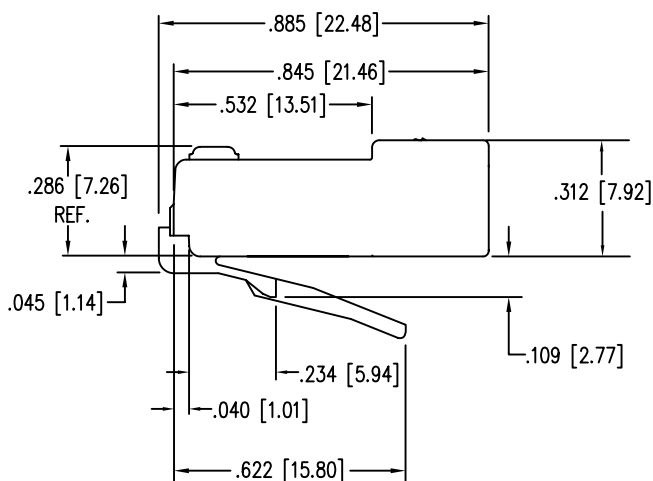
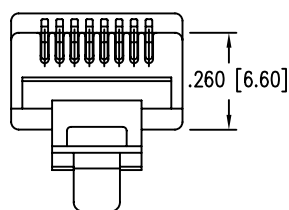
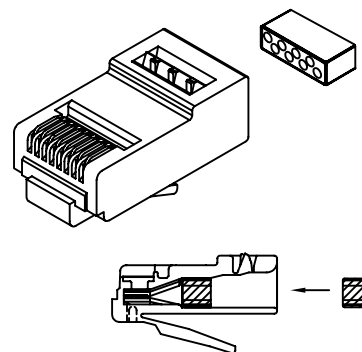
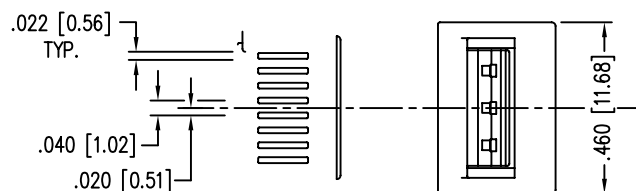


QuickTreX® Category 5E, 8 Conductor Modular Plugs w/ Loadbar - Bag of 100

Part # QT-LS5U-P100



- * EIGHT CONDUCTOR MODULAR PLUG
- * FOR HIGH SPEED APPLICATION
- * FOR CONDUCTORS WITH AN O.D. RANGE OF .037/.042
- * USES .012 CONTACT



SPECIFICATIONS :

PERFORMANCE:

EXCEEDS CATEGORY 5 EIA/TIA 2840, ANNEX B SPECIFICATION

CONTACT MATERIAL:

CONTACT PLATING:

50 MICRO-INCH
SELECTIVE 24 CARAT HARD GOLD PLATE IN CONTACT AREA
OVER 100 MICRO-INCH MINIMUM NICKEL PLATE
PER CURRENT SELECTIVE GOLD PLATING REQUIREMENTS.

PLUG MATERIAL:

PLUG TOLERANCES AND DIMENSIONS:

U.L. RECOGNIZED

FLAME AUTO EXTINGUISH

OPERATION TEMPERATURE:

INSERTION/EXTRACTION LIFE:

CONTACT RESISTANCE:

CURRENT/VOLTAGE:

File# E188111

94-V0

10 MILLO

30 VAC/42 VDC AT 1.5 AMPS

LANshack

Sales@LANshack.com | 888-568-1230